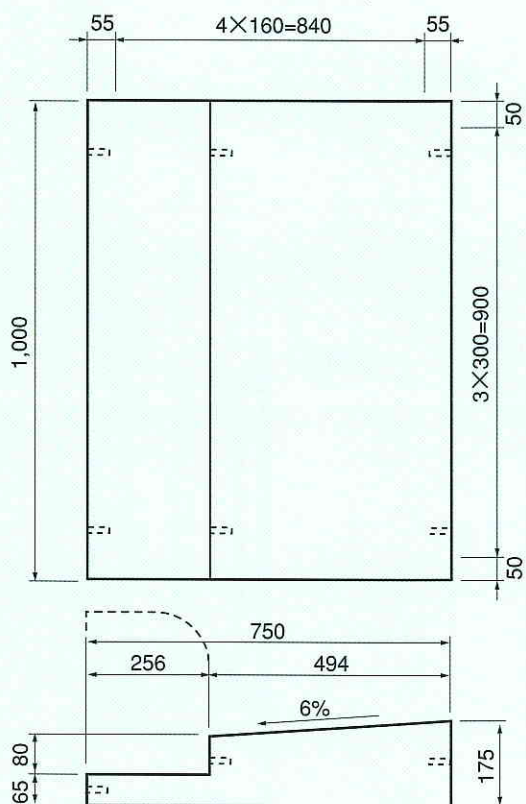


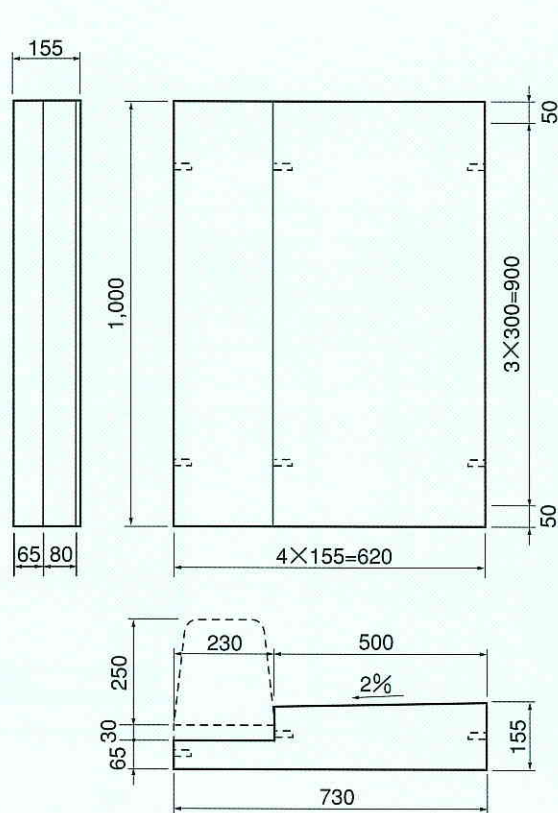


街渠エプロン

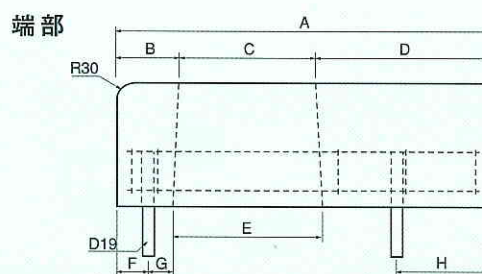
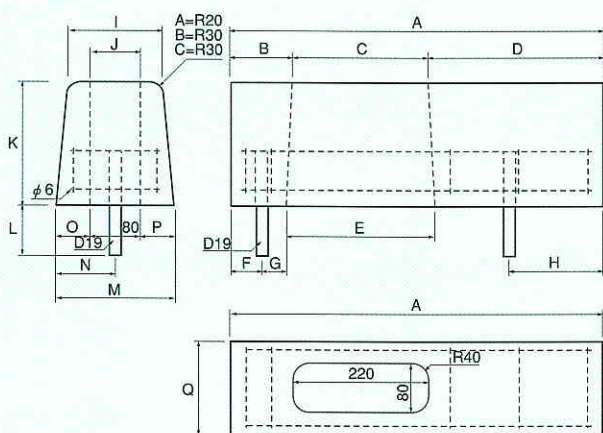
街渠エプロン (勾配 6%)



街渠エプロン (勾配 2%)



支柱穴付両面歩車道



呼び方	寸 法 (m/m)																参考重量 (kg)	
	A	B	C	D	E	F	G	H	I	J	K	L	M	N	O	P		Q
A	600	100	220	280	240	50	40	150	150	80	200	80	190	95	55	55	150	39
A端部	600	100	220	280	240	50	40	150	150	80	200	80	190	95	55	55	150	39
B	600	100	220	280	245	50	37.5	150	180	80	250	80	230	115	90	75	180	61
B端部	600	100	220	280	245	50	37.5	150	180	80	250	80	230	115	90	75	180	61
C	600	115	220	265	250	50	50	150	180	80	300	80	240	120	80	80	180	70
C端部	600	115	220	265	250	50	50	150	180	80	300	80	240	120	80	80	180	70